



RG-WG

WebGuard

V1.0

©2017



	RG-WG	WebGuard	1
1			7
	1.1	RG-WG 1000E-A	7
	1.2	RG-WG 2000E-A	9
	1.3	RG-WG 3000E-A	10
2			13
	2.1		13
	2.2		13
			13
			13
			14
	2.3		14
			14
			14
3			15
			15
			15
4			17
	4.1			

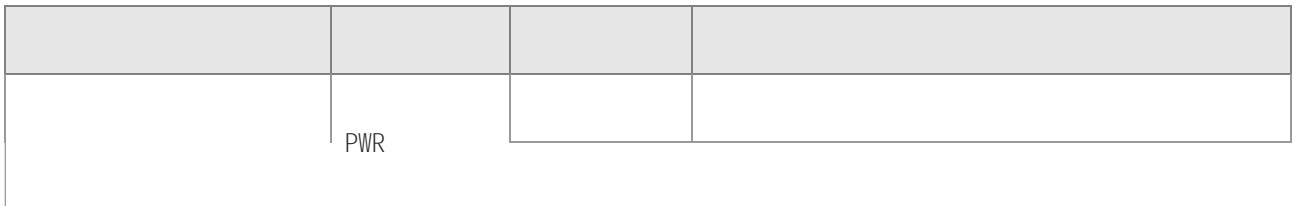
4.3.2	PC	19
4.3.3	Web	19
4.3.5	20
5	22
5.1	22
5.2	22
6	24
6.1	24

RG-WG 1000E-A

- 1 Console RJ45
- 2 USB
- 3 PWR power HDD BYP bypass
- 4 6 GE3<->GE4 GE5<->GE6 bypass
- 1 4
- RG-SEC-4SFP 4 RG-SEC-8GE 8 RG-SEC-8SFP 8 RG-SEC-4GE4SFP 4
- 4

<5s

>=5s



2 Console RJ45
3 USB
4 BYP1 BYP2 bypass
5 6 eth2<->eth3 bypass eth4<->eth5 bypass
6 1 5
RG-SEC-4SFP 4 RG-SEC-8GE 8 RG-SEC-8SFP 8 RG-SEC-4GE4SFP
4 4 RG-SEC-2XEF 2 SFP+

<5s

RG-SEC-4SFP 4

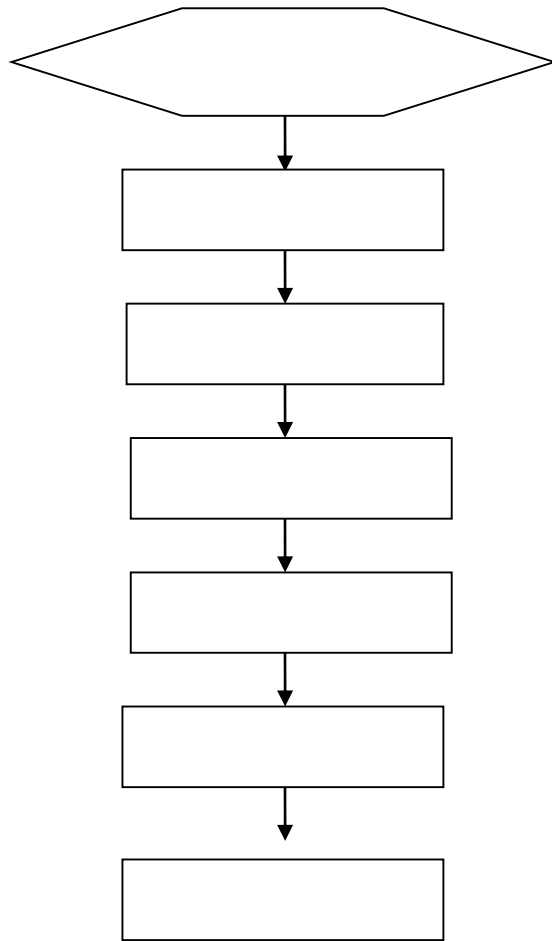
RG-SEC

2

2.1

RG-WG	1
	1
	2
	1

2.2



4

4.1

RG-WG

RG-WG



4.2

4.3

4.3.2 RG-WG
4.3.3 PC
4.3.5 Web

4.3.1

RG-WG

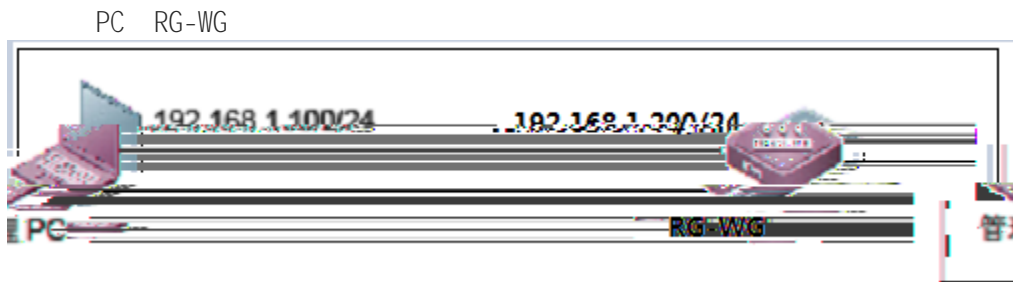
IP

IP

IP

4.3.2

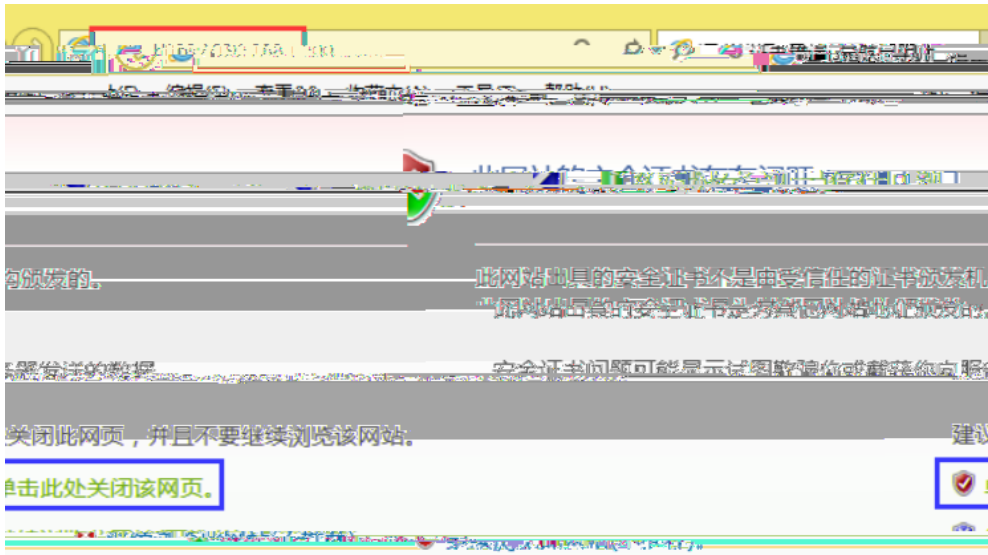
PC



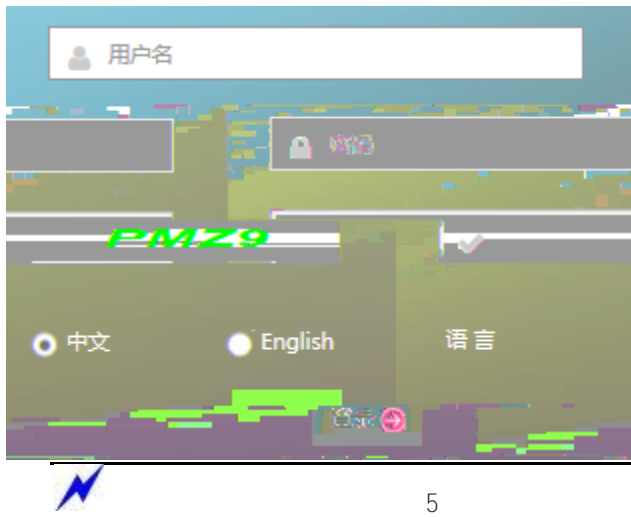
4.3.3 Web

1. RG-WG 3~5

2. IE <https://192.168.1.200>



3. admin admin



4.3.5

>>



5

5.1

CPU

CPU

80%

80%

Web

CPU

CPU

CPU

80%

CPU

80%

90%

6

6.1

