



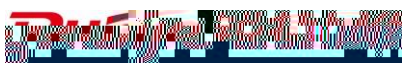
RG-WALL 1600-X8500

V1.4

3w4@ @

©2013

瑞吉特网络科技股份有限公司



Ruijie

RGOS®

RGNOS®

1

RG-WALL 1600-X8500
8 SFP RJ 45 20Gbps
RG-WALL 1600-X8500 128G WAN
RG-WALL 1600-X8500

1.1 RG-WALL 1600-X8500

	RG-WALL 1600-X8500
	0 to 40°C

RG-WALL 1600-X8500

1-2

2

2.1

RG-WALL 1600-X8500

2.1.1

2.1.2

2.1.3

2.1.4

RG-WALL 1600-X8500

RG-WALL 1600-X8500

2.2.3

RG-WALL 1600-X8500

RG-WALL 1600-X8500

0°C-40°C	20%-90%
----------	---------

1.5M

0.4M

2.2.4

/	0.5	1	3	5
---	-----	---	---	---

2.2.7 EMI



3.3

5mm

1.5cm

- 1)
- 2)
- 3)
- 4)

1RU=44.45mm(1.75inch) IEC60297 19 1RU 3-1

RU Rack Unit

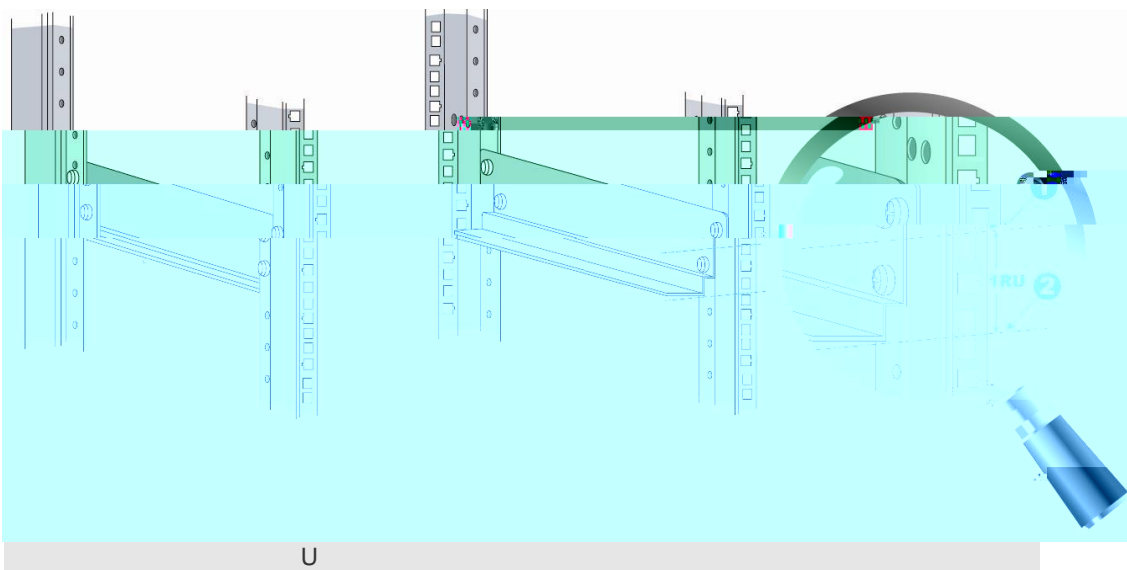
WALL 1600-X8500

RU

U

RG-

3-1



RG-WALL 1600-X8500

RG-WALL 1600-X8500

368 1529 1911 BT0 0 0 10707816724646 113 1503 1957 298 D0 44 42 1100 2005 DB25 7050

I 2 6 •

RG-WALL 1600-X8500

10mm

- 1) RJ45 RJ45
- 2) ,
- 3) RJ45
- 4)

3) 3-7

- 1.
- 2. SFP
- 3.
- 4. SFP



3-7

- 5.
- 6.

SFP+/SFP

SFP+/SFP

SFP+

SFP+		SFP+	SFP+
1)			
2)		SFP+	
3)	SFP+		SFP+
SFP+			8

3.10

SFP+/SFP

SFP+/SFP

- 1.
- 2. SFP+/SFP
- 3.
- 4.

5.

SFP+/SFP

SFP+

SFP+

1)

2)

SFP+

SFP+

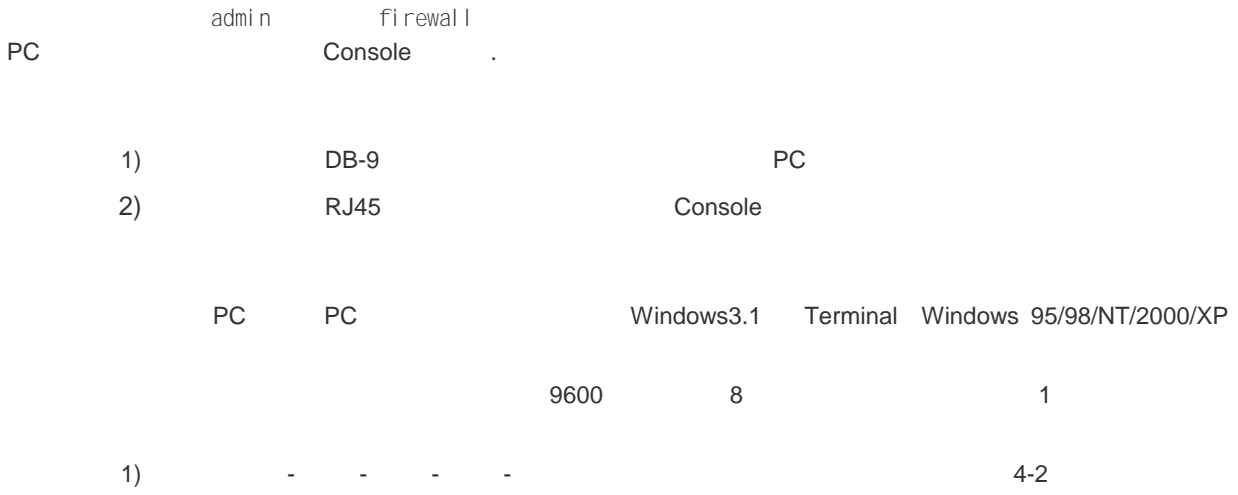
SFP+

SFP+

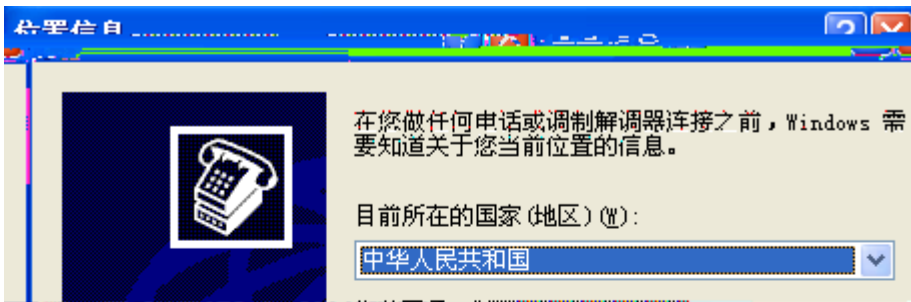
8

4

4.1



4-1



从拨号网络中删除连接

1) 9600 (D)

2)

4-2



4-3

3)

< >

4-4

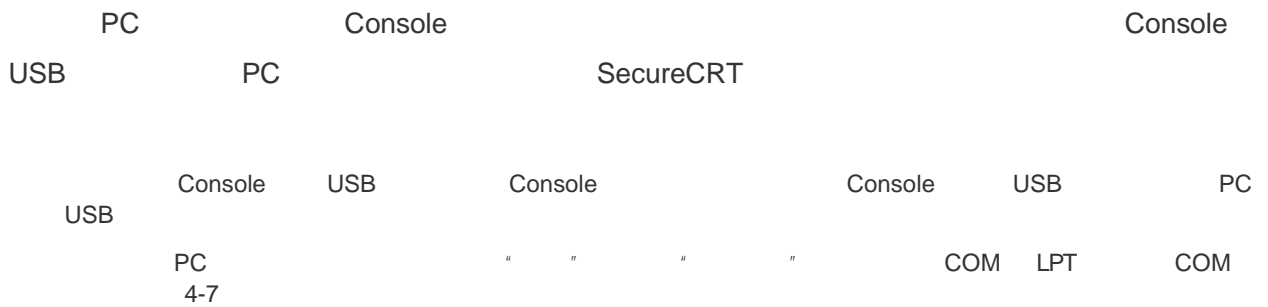
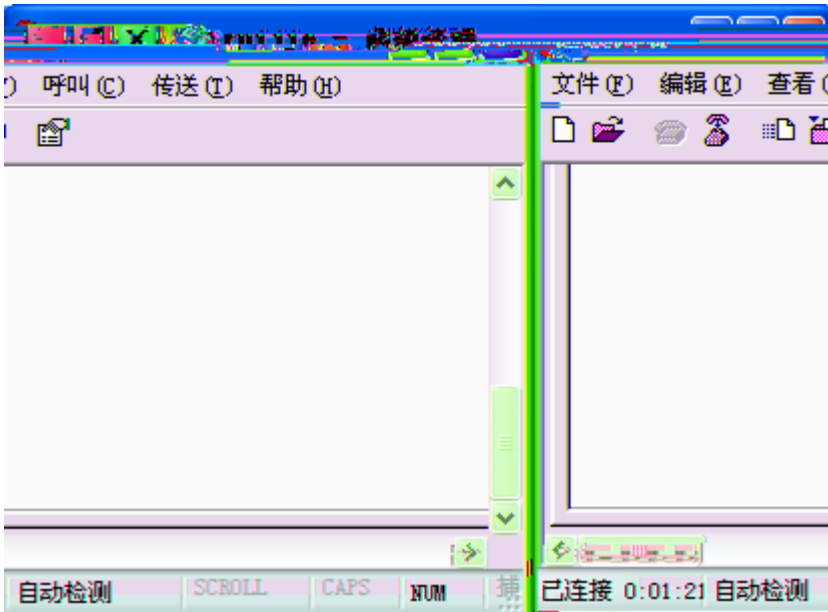
4-3



5)

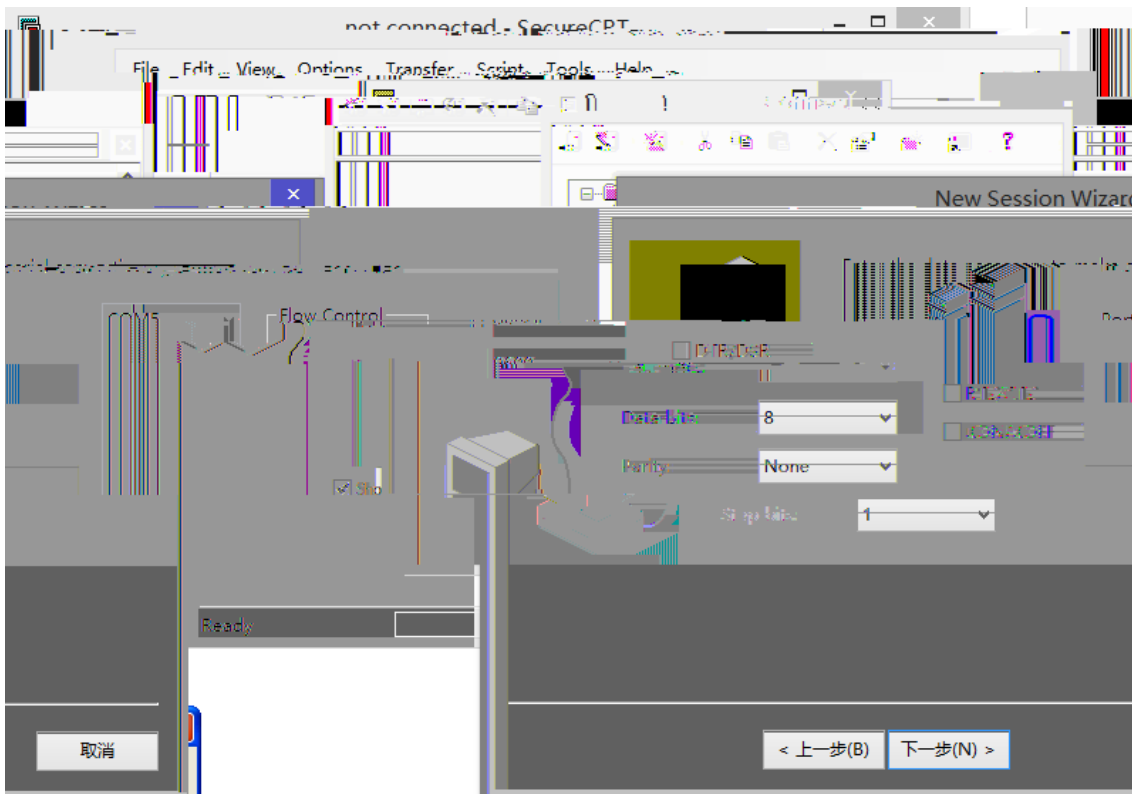
< >

4-6



9600 8 1

1) ile - Connect Connect

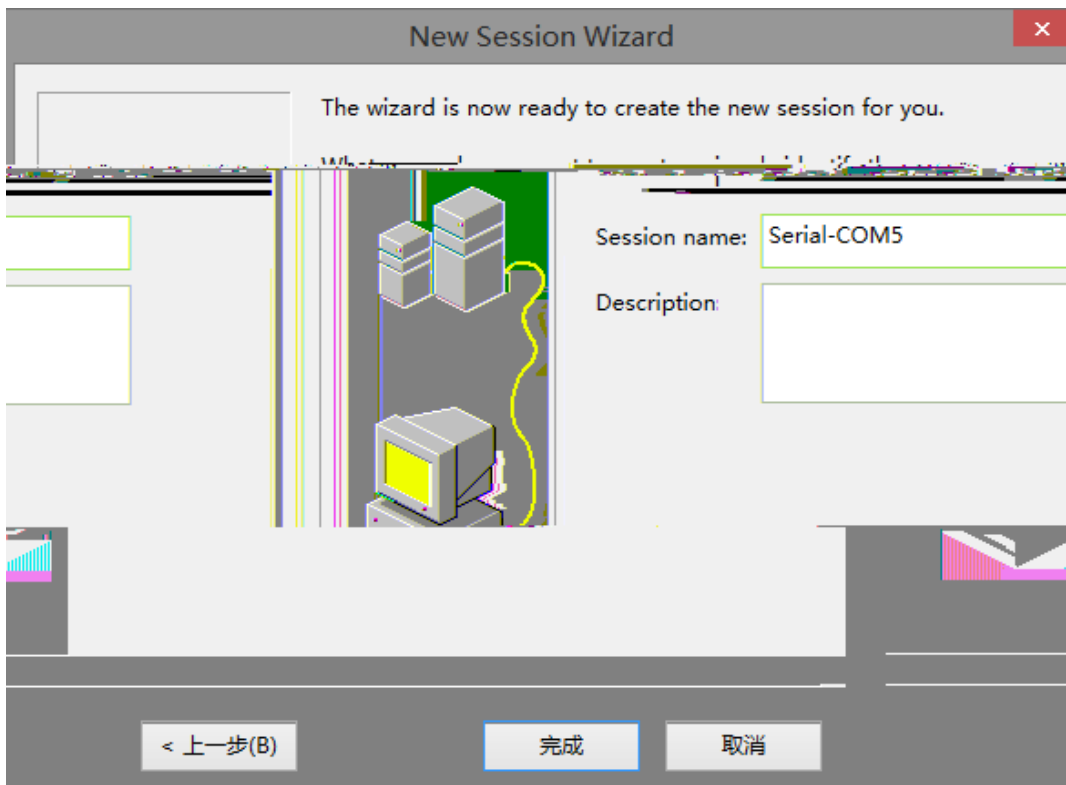


4-9

3)



4-10

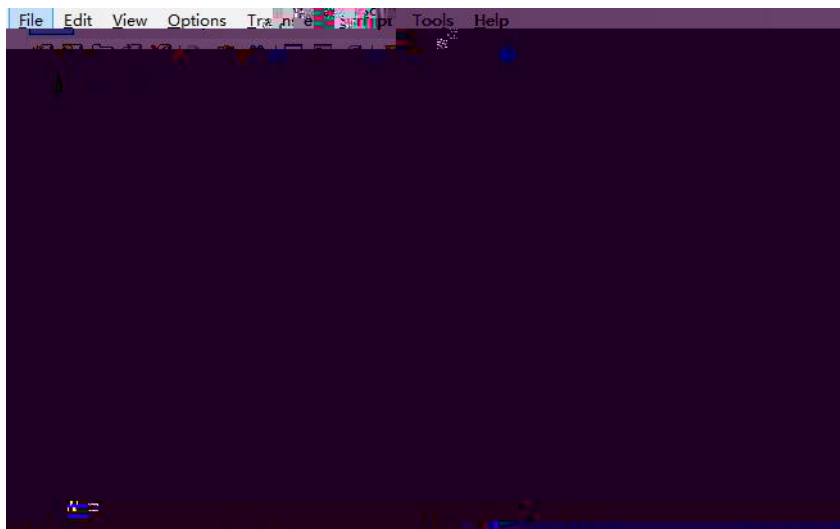


4-10

4)

< >

4-11



4-11

4.1

PC

5

5.1

RG-WALL 1600-X8500

5-1 RG-WALL 1600-X8500

#	LED		
1	STATUS		
2	ALARM		
3	POWER		
4	HA		HA
			HA
			HA
5			
			/
5			1Gbp
			100Mbps

5.2

3

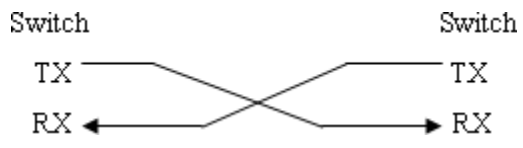
4

5 **link**

link

A

A 4



B

RG-WALL 1600-X8500

19

7

5

7

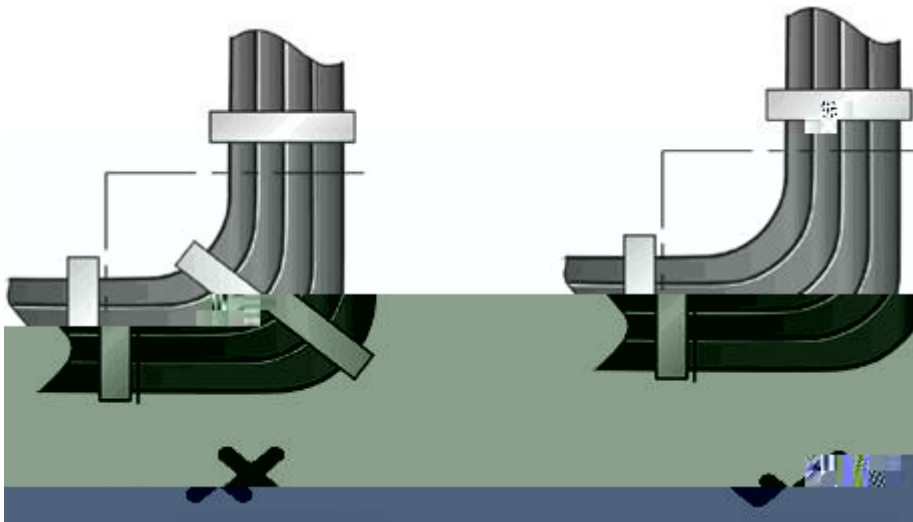
10

D-2



D-3

D-3



220V

-48V

D-4

D-4

